

Pressure Gauge

This robust liquid-filled pressure gauge is used for heavy-duty service where vibration or pulsation of the pressure might cause excessive wear of a dry gauge or where corrosive ambient conditions or fluid prevail.

Technical Data

Dial size: 2 1/2" (63 mm)

Connection: 1/4" NPT, back or bottom

Scales:

0-6, 10, 16, 25 and 40 bar

0-90, 140, 230, 350 and 600 psi

Accuracy: ± 1.6% of full scale dial

Maximum temperature: 60°C (140°F)

Standard materials:

Case: Stainless steel 304

Window: Extruded acrylic sheet

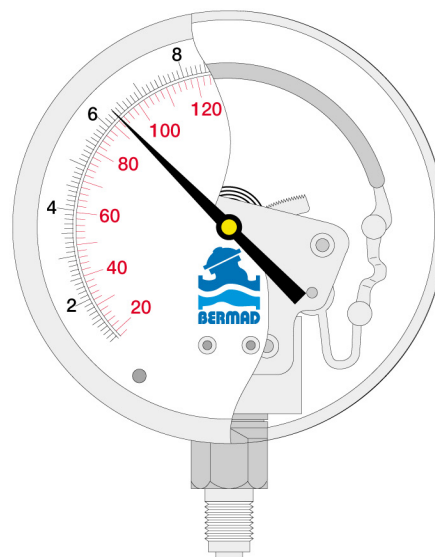
Seal: Neoprene

Dampening fluid: Glycerin

Socket: Brass

Bourdon tube: Bronze

Dial & pointer: Aluminum





Trädgårdsteknik AB
Helsingborgsvägen 578
262 96 ÄNGELHOLM
Telefon: 0431-222 90
Telefax: 0431-222 70
info@tradgardsteknik.se
www.tradgardsteknik.se