



JAVO QUICKFILLER (JC108)

Specifications:

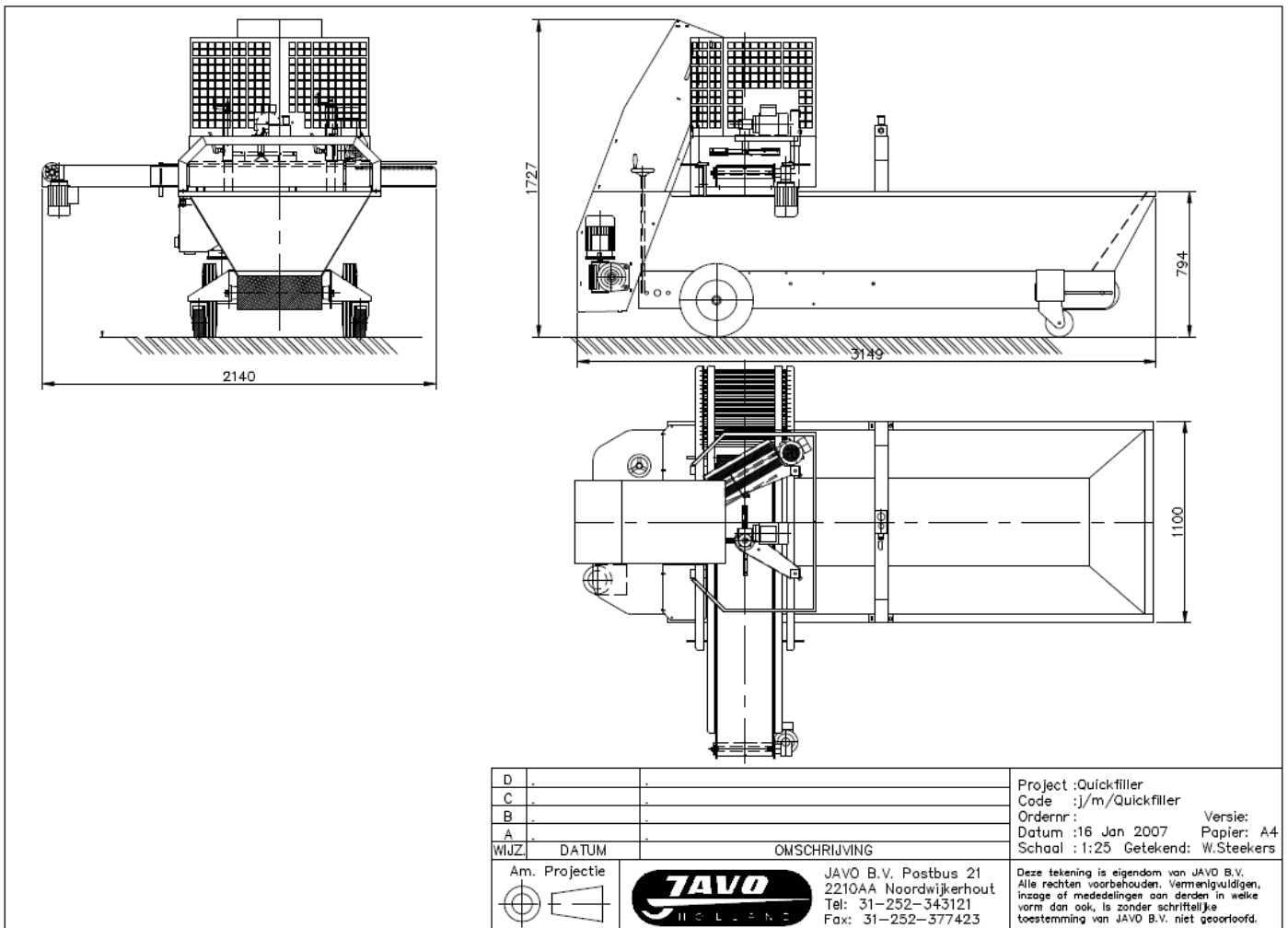
Voltage	~240 Volt AC + PE 50HZ (N. America 208/220V. 60Hz) incl. 2,2kw control
Power connection machine	16A 3phase 5pin
Power	1.5 kW
Length	3.150mm
Width	2.180mm
Height	1.730mm
Weight	±750kg
Height take off belt	900mm
Working direction	From left to right
Max. speed	540,0 m. p/h at 60,0 Hz.
Min. Speed	126,5 m. p/h at 12,5 Hz.
Min. Height tray	30mm
Max. height tray	230mm
Max. width tray	350mm
Capacity soil bin	770 Ltr
Maintenance set	3x open end wrench 1x door key
Drive supply belt	Motor on frequency (0,37kW) control (controls on electric box)
Tray guide 2 sides	Adjustable in width
Tray outlet	Roller track with 10 pieces of rollers
Soil door in soil bin	
Vibration unit under tray belt	Standard mounted and adjustable in height

Options:	Code:	Specifications:
4 meter 5x1.5 cable incl. 16A plug	900965	
Continuous plug box	900966	Not standard on the electric box
Soil bin extension	203-170	705 Ltr extra capacity
Extra roller in the roller track	203-913-5	8 extra rollers can be placed in between.
Heavy unmovable air wheels frontside	SU1L	

Notes:

-The Quickfiller is a right machine. The tray moves from left to right (as seen from the soil bin side to the elevator).

-Since July 2010 the Quickfiller is equipped with a 2,2kW control (instead of 1,5kW).





Partner in Growing



Newsletter

SUBJECT: Quickfiller

DATE: 16-06-09

From now on, the Quickfiller will be delivered with an extra set of covers next to the elevator (art. no. 203-925)

Pos 17 in the drawing below.

BENODIGDE VOLGORDE		KLJZ.	DATA	OMSCHRIJVING	SET.
1	MONTAGE	A			
2	..	B			
3	..	C			
4	..				
5	..				
6	..				
7	..				

1	17	PM1925	RECHT SCHERENPLATEN HAASST. ELEVATOR	203-925
4	16	PM1910	OLEN-SET	203-070
1	15	PM1 916	SO-HARNERPIEPEN	203-516
1	14	PM1 915	BOVENPLAAT	203-915
1	13	PM1 913	TRANSPORTBAND	203-913
2	12	514651	SLINGER	514651
1	11	PM1 910	BORSTEL-LIJNT	203-910
2	10	PM1 911	STUURPLAAT	203-911
1	9	PM1 910	GRONDCELDEERPLAAT	203-910
2	8	PM1916	SLOT SPEDIAAL	203-016
1	7	PM1 908	MOLEN COMPLEET	203-908
1	6	PM1 907 R	DEUR RECHTS	203-907-R
1	5	PM1 907 L	DEUR LINKS	203-907-L
1	4	PM1 905 R	DRANKROEKER RECHTS	203-905-R
1	3	PM1 905 L	DRANKROEKER LINKS	203-905-L
1	2	PM1 905 L	VOORPLAAT LINKS	203-905-L
1	1	PM1 905 R	VOORPLAAT RECHTS	203-905-R

Aank. / Pos. / Tekeningnummer		Omschrijving		Artikel nr.
BEMERKING			REF. NR.	DA/TM
SAMENSTELLING QUICKFILLER BOVENBOM			PM1900	251-09
MODEL 5 MACHIEFABRIEK B. V. ALBERENHOUT 2, 2222 AA ROTTERDAM TEL. 071-326111 FAX 071-326196		MODEL-NUMM.	REF. NR.	ARTIKEL-NUMMER
203	203	203-900		



Partner in Growing



Newsletter

SUBJECT: Changes Quickfiller

DATUM: 10-11-09

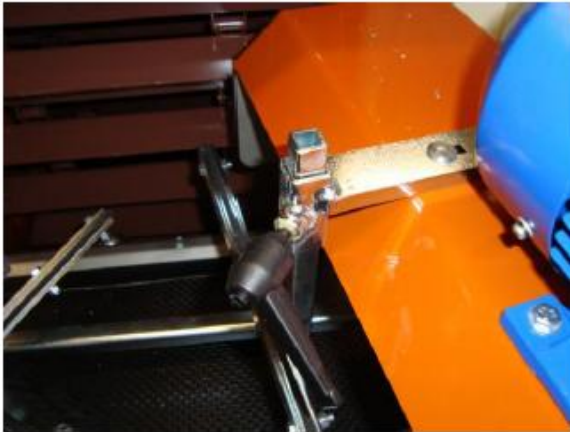
From now on, the following changes have been made on the Quickfiller.



Side conduction profile will be mounted with countersunk bolts.



The V-belt has been replaced by a jagged V-belt.



Screw of the scraper adjustment will be mounted the right way.

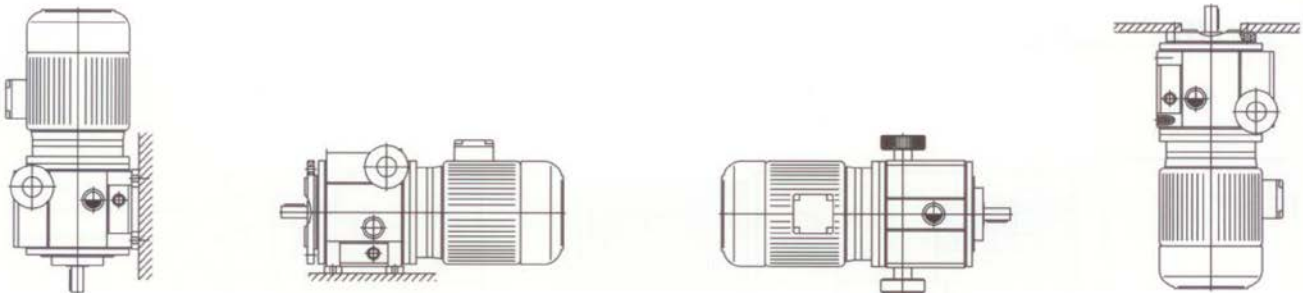


Cover plate of the brush has been shortened on the underside with 25mm. Also the mounting plate of the bearing block has been shortened on the underside.



Assembly bracket for the control box.

Oil quantities (ccm) variable-speed ball drive KR1-KR4



Einbaulage	V1, V5, V18	B3, B5, B14	B6, B7	V3, V6, V19
KR1	70	70	70	70
KR2	200	125	200	125
KR3	400	250	400	250
KR4	800	450	800	450

Only the use of Santotrac 50/Variotrac 32 synthetic traction fluid ensures full power transmission.

The warranty requires this oil type to be used. The oil should be changed after 5000 operating hours (at least once per year). The oil change must not be carried out during operation. No other maintenance work is required.

Oil quantities FMRV + FDL:

Drive:	Quantity (ltr):	Type:
FMRV030	0,05	BP Energol SG-XP320
FMRV040	0,1	BP Energol SG-XP320
FMRV050	0,15	BP Energol SG-XP320
FDL018	0,13 (aber in vertikal mit Wellenende nach unten: 0,2)	BP Autran DX
FDL037	0,15 (aber in vertikal mit Wellenende nach unten: 0,25)	BP Energol SG-XP320

Trädgårdsteknik AB
Helsingborgsvägen Varalöv
262 96 ÄNGELHOLM
Tel: 0431-22290
Fax: 0431-22270
Mail: info@[tradgardsteknik.se](mailto:info@tradgardsteknik.se)
Webb: www.tradgardsteknik.se